



**CT**  
UNIVERSITY  
PUNJAB · INDIA

*Career Begins Here...*

Times School  
ranked  
**20**  
Among Top Private Universities

AAA+  
RATING



**CT**  
GROUP  
SINCE 1997  
PUNJAB (INDIA)  
Leading the Way in P.B. Courses



# CAREER TRANSFORMATION



Cutting-edge laboratories



Versatile sports arenas



A three-tiered Knowledge Hub



Tech-savvy campus with Wi-Fi integration



Centralized air conditioning for a conducive atmosphere



Digi 100 recognized CT University as Top 100 HEIS pioneering Digital Transformation in India

Ranked  
**48<sup>th</sup>**

Among Top 100 B Schools in India including IIMs & Government Institutions & 3rd Position in Punjab, by TIMES B School Rankings.

Ranked  
**20<sup>th</sup>**

in Top 40 Private Universities in India by TIMES B School Rankings

Ranked  
**2<sup>nd</sup>**

Best Law College in Punjab in IIRF Ranking 2025

Ranked  
**49<sup>th</sup>**

All India Best Law Colleges by IIRF-2025



**CTU**  
CAREER TRANSFORMATION

**1800+**  
Recruiters

**10000+**  
Placements

**1.2 CRORE**  
Highest Package Offered

# Welcome to CT UNIVERSITY

- Distinguished Doctorate Faculty
- Industry Collaborated Programs & Hands on Learning Curriculum
- 24 x 7 Robotics and Automation Lab Access
- Research & Innovation Centre for Excellence
- Comprehensive Training, Internship and Placements Opportunities
- Professional Skills Enhancement Cell
- Supplementary IAS/IPS Coaching and Civil Services.
- Student Ambassador Program: Earn While You Learn
- Startup and Incubation Hub
- International Mess Food
- Round-the-Clock Medical Assistance
- Training & Placement Cells
- Transport & Hostel Facilities Available

## Flagship Programmes in Engineering, Technology & Management

- B.Tech Computer Science and Engineering
- B.Tech CSE with Specialization in Cyber Security & Forensics - IBM
- B.Tech CSE with Artificial Intelligence & Data Sciences - IBM
- B.Tech CSE with Specialisation in Robotics and Artificial intelligence (AI)
- B.Tech CSE with Specialisation in Cloud Computing
- B.Tech Mechanical Engineering
- B.Tech Civil Engineering
- MBA Residential (International) With Placement Assurance



## From Foundation to Pinnacle: Unlocking Opportunities - Certification, Diploma, UG, PG and Ph.D.

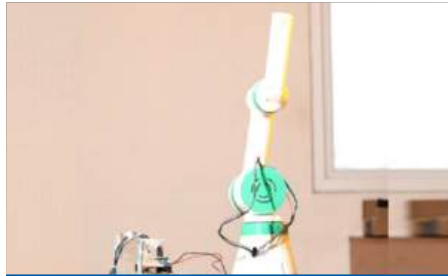
Engineering & Technology	<ul style="list-style-type: none"> <li>- Computer Science</li> <li>- Mechanical</li> <li>- Civil</li> <li>- Artificial Intelligence &amp; Data Science</li> <li>- Robotics and Artificial intelligence (AI)</li> <li>- Cyber Security &amp; Forensics</li> <li>- Cloud Computing</li> </ul>
Management	<ul style="list-style-type: none"> <li>- B.Com (Honors) with Tally Integrated with IAS Coaching</li> <li>- Bachelor of Business Administration</li> <li>- BBA/B.Com ( CFA) Powered by Sanjay Saraf</li> <li>- BBA ++ Corporate</li> <li>- MBA</li> <li>- BBA-MBA</li> <li>- MBA International</li> <li>- BBA with Specialisation in AI / Business Analytics (IBM)</li> </ul>
Hotel Management, Airlines & Tourism	<ul style="list-style-type: none"> <li>- Hotel Management/Culinary Arts</li> <li>- Airlines &amp; Tourism/Aviation</li> </ul>
Law	<ul style="list-style-type: none"> <li>- B.A., LL.B.</li> <li>- B.Com., LL.B.</li> <li>- BBA, LL.B.</li> <li>- LL.B.</li> <li>- LL.M. Criminal Law/ Corporate Law</li> </ul>

Design and Innovation	<ul style="list-style-type: none"> <li>- Multimedia &amp; Animation</li> <li>- UI/UX</li> <li>- Fashion Design</li> <li>- Beauty &amp; Wellness</li> <li>- Bachelor of Fine Arts (BFA)</li> </ul>
Social Sciences & Liberal Arts	<ul style="list-style-type: none"> <li>- BA with IAS/ IPS Coaching</li> <li>- Bachelor of Social Work (Hons.)</li> <li>- B.Sc /M.Sc. Clinical Psychology</li> <li>- BAJMC</li> </ul>
Pharmacy	<ul style="list-style-type: none"> <li>- D. Pharmacy</li> <li>- B. Pharmacy</li> <li>- Pharm.D (Post Baccalaureate)</li> <li>- Pharm.D</li> <li>- M. Pharmacy</li> </ul>
Allied and Healthcare	<ul style="list-style-type: none"> <li>- Anesthesia &amp; Operation Theater Technology</li> <li>- Physiotherapy</li> <li>- Medical Lab Technology</li> <li>- Medical Radiology &amp; Imaging Technology</li> <li>- B.Optomety</li> <li>- M.Optomety</li> </ul>

# Research & Innovation Centre for Excellence



Robotic Spider



Robotic Arm



Smart Shoes



Red Knight



Smart Agricultural Robot



Smart Cabinet



Dr. Satish Dhawan - Centre for Skill Development

## Robotics Lab



Prosthetic Hand



Innovation Wheel



Robotic Dog



Vintage Car



Business Analytics Lab



Happiness Lab



Automation Lab

## Cultural Events:

The university hosts vibrant cultural events, including annual fests and international festivals, fostering a rich and diverse campus life.



## Laboratories:

State-of-the-art laboratories are available across various departments, enhancing practical learning and research opportunities.



Mechanical Lab



Pehrava Designer Studio



Drosophila Research Lab



Zebrafish Lab



Physiotherapy Lab



Aviation Plane



Pharmaceutical Lab

## Sports:

CT University promotes physical well-being through facilities like a swimming pool, gym, and various sports events, encouraging student participation in athletics.



# Learning Se Earning Tak



HYATT  
Boston-USA

66 LACS



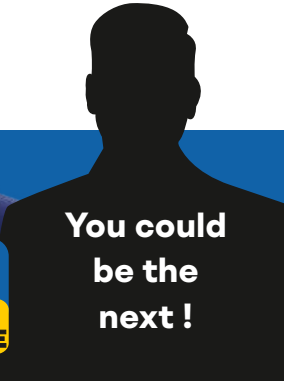
EA

88 LACS



LINGA

1.2 CRORE



You could be the next!

## Internships:

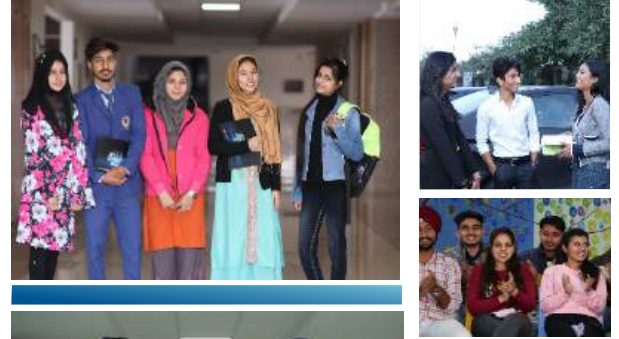
Students have access to summer internship programs, providing real-world experience and industry exposure.

## Alumni Network:

CT University maintains a strong alumni network, organizing events like alumni meets to foster connections among graduates.

## Moot Court:

The School of Law features a Moot Court, offering law students practical advocacy experience through competitions and simulated court proceedings.



## Professional Learning Studios & Outlets:

Aryana Bakery & Café and Pehrava – The Designer Studio are run by students, providing hands-on experience in hospitality and fashion design, while the Beauty & Wellness Studio offers professional training and practical exposure in makeup, haircare and wellness services under expert guidance.



# Joint Collaborative Specialization Programs with IBM

CTU's IBM collaborative programs stand as a valuable asset for students aspiring to build a successful career in the industry. By integrating practical experiences and industry-relevant skills, these programs go beyond traditional education, offering a comprehensive approach to learning that enhances language proficiency and ensures students are well-prepared for the demands of the professional world.



## Felicitation Ceremony of Shining Stars



## Academic Excellence Awards



Scan to Register

 **CT-SET**  
CT University Scholarship  
Entrance Test

Dr. Manmohan Singh Scholarship offered upto

**Rs.40 CRORES\***

\*based on CT-SET Score



## Industry Partners



## Academic Partners



## Placement & Training Partners



## Industry Membership



**For More Info Call Now**

+91 99145-11016  
1800-137-7777

CT University, Ludhiana  
Punjab, INDIA

Visit Us:  
[www.ctuniversity.in](http://www.ctuniversity.in)